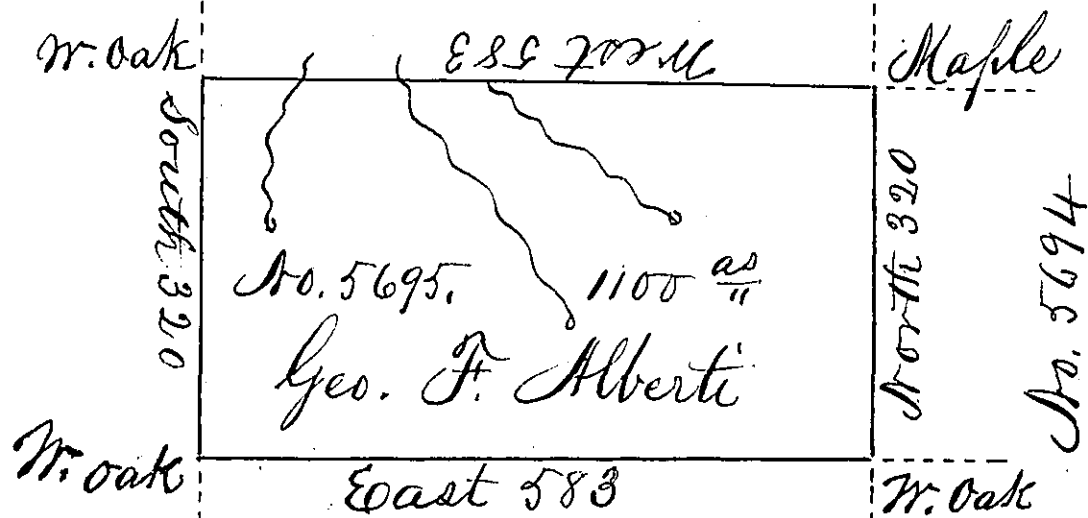


No. 5696.



Wm Bingham Esqr.

In pursuance of a warrant No. 5695 dated December 1<sup>st</sup> 1794, Surveyed February 2<sup>nd</sup> 1795 to George F. Alberti, the above described tract of land situate on the south side of Toby's creek, adjoining lands surveyed to William Bingham Esq. in the late Purchase Northumberland County in district No. 6. Containing eleven hundred acres and allowance of six P. Cent.

Daniel Brodhead Esqr,  
Surveyor General

Jr. Brodhead D.S.

IN TESTIMONY that the above is a copy of the original remaining on file in the Department of Internal Affairs of Pennsylvania, made conformably to an Act of Assembly approved the 16th day of February, 1833, I have hereunto set my Hand and caused the Seal of said Department to be affixed at Harrisburg, this

Twelfth day of December 1834.

J. Simpson Africa,  
Secretary of Internal Affairs